

Fall 2011 Seminar Series

Origins @ Yale

James Kasting

Pennsylvania State University, Geosciences

"Is the Earth rare?"

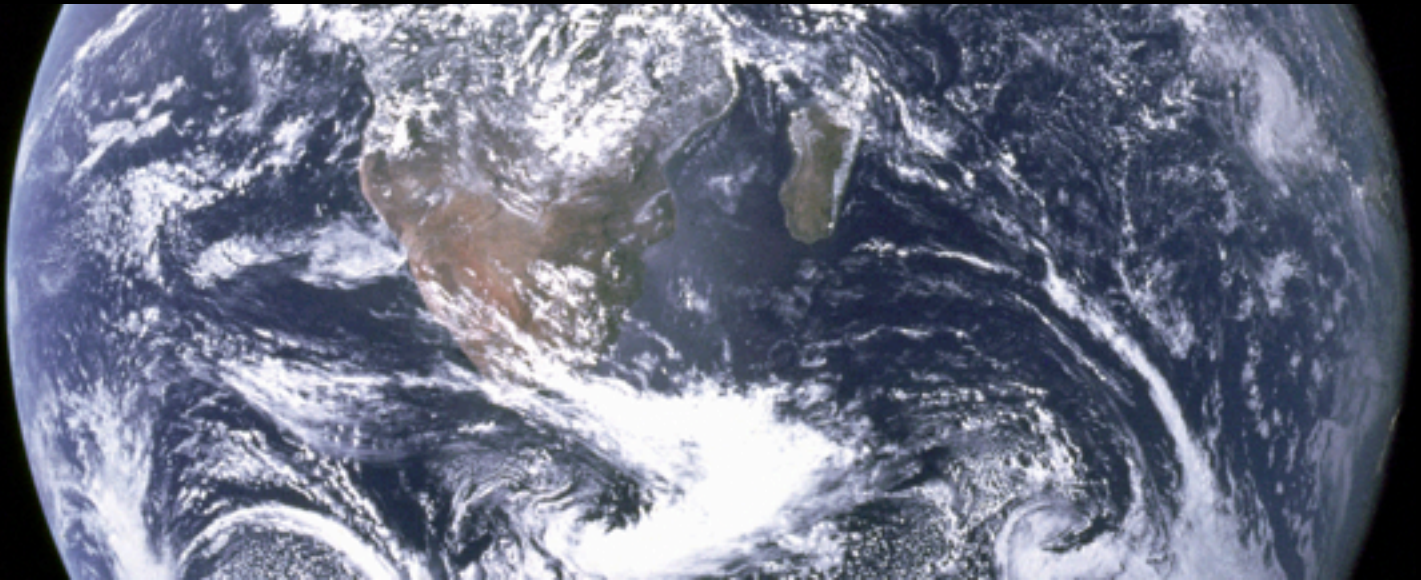


Photo credit: Apollo 17 Crew, NASA

Wednesday, 10/26 @ 2pm Kline Geology Laboratory, Room 123

James Kasting, Professor in the Department of Geosciences at Pennsylvania State University, studies climate evolution and planet habitability. His research interests include atmospheric evolution, planetary atmospheres, and paleoclimates. Recent publications include the book 'How to Find a Habitable Planet.'

exoplanets.astro.yale.edu/science/origins